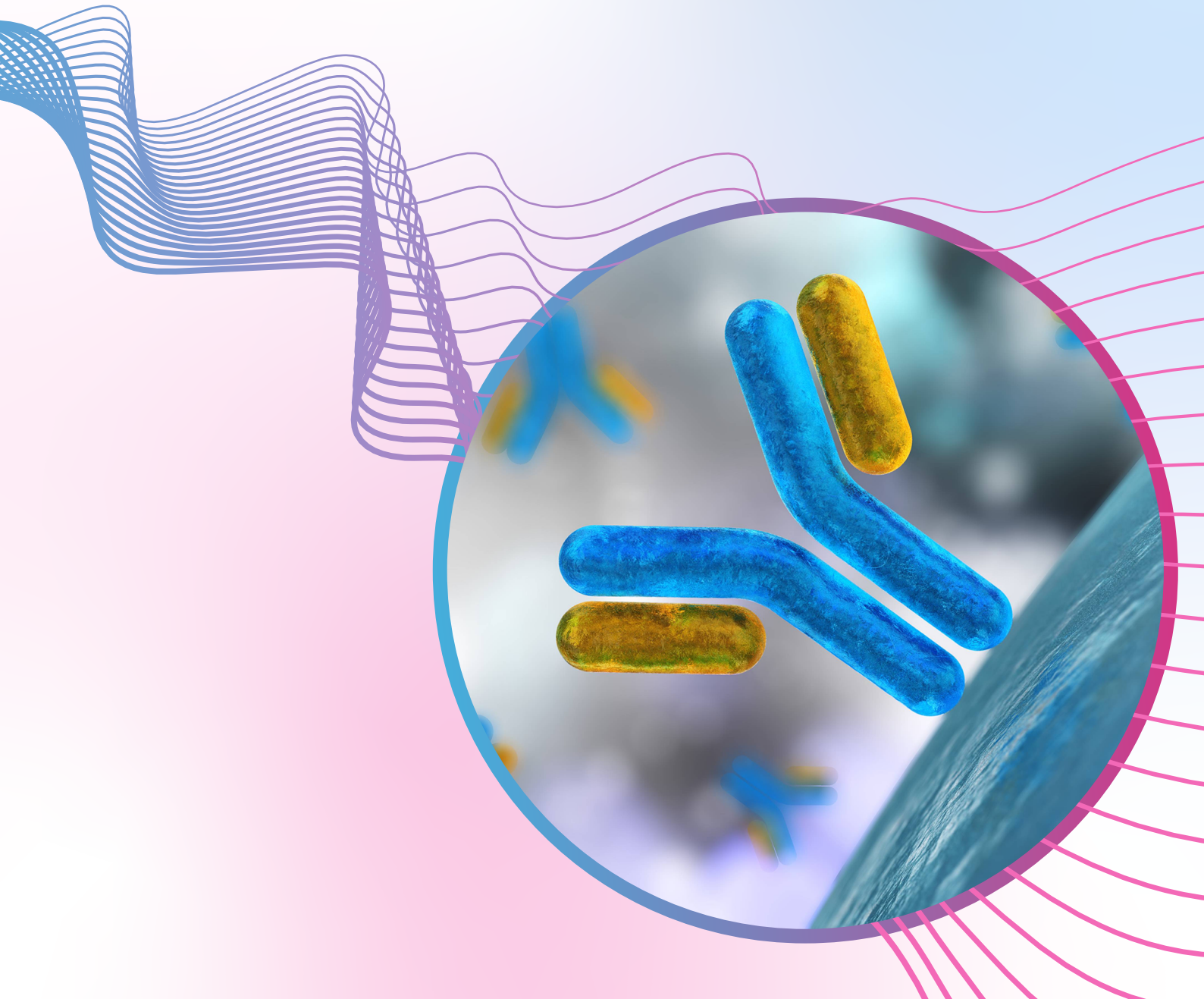


excelra

Comprehensive analysis of putative drug targets and their comparison

Target dossier service

CASE STUDY



Purpose

A large pharma company requested for a comprehensive assessment on two new drug targets of interest which are the most abundantly expressed inhibitory Leukocyte immunoglobulin (Ig)-like receptors.

Client



Industry
Pharma



Location
US

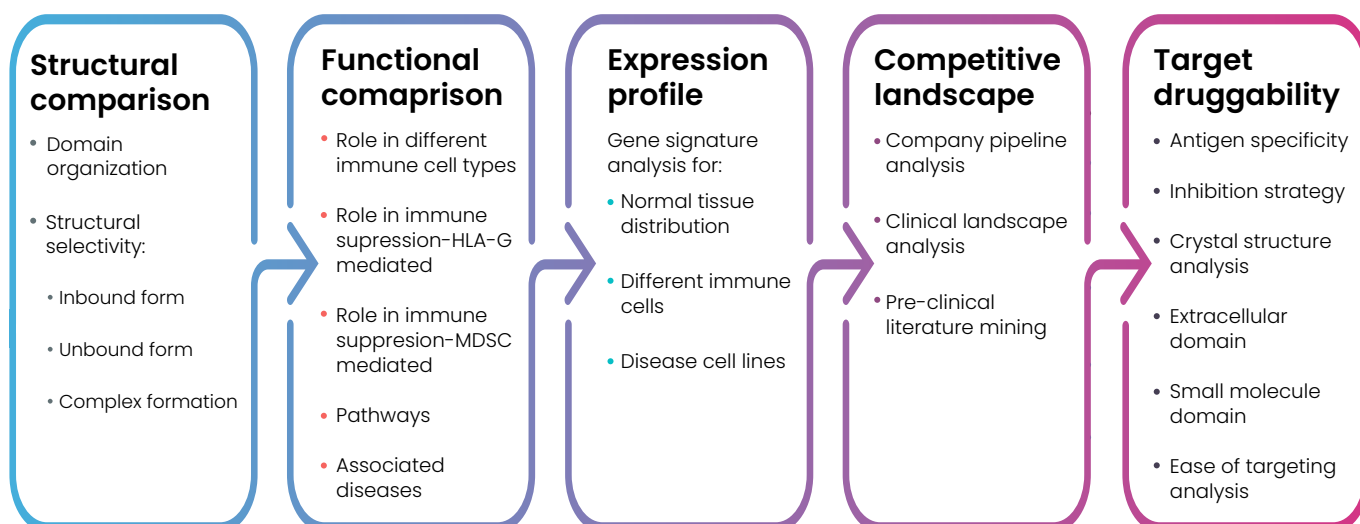


Sector
Immuno-oncology

Our approach

Some key highlights from the outcomes are:




- ✓ Target function in healthy tissues as well as its association with disease(s)
- ✓ Molecular pharmacology, target expression across human tissues/organs, species, gene alterations and target interactions with other proteins/genes
- ✓ Sequence, crystal structure, domains and homology modelling
- ✓ Adverse events or toxicity data for compounds at any stage of development
- ✓ Recommendation of animal models and pre-clinical assays
- ✓ ON- and OFF- target safety assessment and de-risking strategies
- ✓ Competitor profile: Competitive landscape of drug development by stage (approved, clinical & pre-clinical drugs)



Our contribution

A holistic view of the two targets was provided. The role and MoA of both isoforms were established in the disease of interest. One target was recommended over the other, given that it would be first in class therapy with no current evidence of clinical testing in humans and is easier to target based on crystal structure analysis.

Our service portfolio

 <p>Data</p>	<p>Data curation Filter out the noise, focus your attention</p> <p>Clinical data Analysis-ready data for informed clinical decision-making</p> <p>Semantic data Refine your decisions, find your value</p>
 <p>Insights</p>	<p>Bioinformatics Illuminating the path to faster discoveries</p> <p>Data science Unlock the power of data</p> <p>Visualization Pictures paint a thousand words</p>
 <p>R&D technology</p>	<p>Product design and development Unlock your potential with data-driven design and development</p> <p>Cloud enablement Optimize your output on the cloud</p> <p>Data engineering Mitigate risks, protect your data, and rationalize your portfolio and processes.</p>



Where data means more

excelra

BOSTON | UTRECHT | HYDERABAD

Connect with our experts: marketing@excelra.com

www.excelra.com